

TENMAT Gate Applications

Date	Utility	Project	Manufacturer	Country	Application	Size	Material
1995/05			Camu	Italy	Gate wheel roller	60 ID	FEROFORM T814
1996/07	ENEL	Domodossola	Electromeccanica Mora	Italy	Gate wheel roller	50 ID	FEROFORM T814
1996/07	Edison		Pintarelli	Italy	Gate wheel roller	80 ID	FEROFORM T814
1996/09	ENEL	Molino	Pintarelli	Italy	Gate wheel roller	105 ID	FEROFORM T814
1996/11		Pont Ventoux	STF	Italy	Gate wheel roller	90 ID	FEROFORM T814
1996/12			Camu	Italy	Gate wheel roller	75 ID	FEROFORM T814
1996/12			Pintarelli	Italy	Gate wheel roller	80 ID	FEROFORM T814
1996/12	ENEL	Castello	Riva Calzoni	Italy	Gate wheel roller	110 ID	FEROFORM T814
1997/01			Cesari Giovanni	Italy	Gate wheel roller	120 ID	FEROFORM T814
1997/01		Daule Peripa	STF	Italy	Gate wheel roller	75 ID	FEROFORM T814
1997/02			Riva Calzoni	Italy	Gate wheel roller	160 ID	FEROFORM T814
1997/03		Daule Peripa	STF	Italy	Gate wheel roller	50 ID	FEROFORM T814
1997/05	ENEL	Rimini	Cesari Giovanni	Italy	Gate wheel roller	180 ID	FEROFORM T814
1997/06			Camu	Italy	Gate wheel roller	60 ID	FEROFORM T814
1997/06			Cesari Giovanni	Italy	Gate wheel roller	75 ID	FEROFORM T814
1997/07	ENEL		Baruzzi	Italy	Gate wheel roller	45 ID	FEROFORM T814
1997/07		Costa Rica	Cesari Giovanni	Italy	Radial gate trunion	400x450x426	FEROFORM T814
1997/11			Cesari Giovanni	Italy	Gate wheel roller	75 ID	FEROFORM T814
1998/01	ENEL		Baruzzi	Italy	Gate wheel roller	90 ID	FEROFORM T814
1998/01			Camu	Italy	Gate wheel roller	60 ID	FEROFORM T814
1998/02		Torre de Toma	Riva Calzoni	Italy	Gate wheel roller	40 ID	FEROFORM T814
1998/03			Cesari Giovanni	Italy	Radial gate trunion	110 ID	FEROFORM T814
1998/06	ENEL		Baruzzi	Italy	Gate wheel roller	110 ID	FEROFORM T814
1998/08	ENEL	Terni	Camu	Italy	Gate wheel roller	30 ID	FEROFORM T814
1998/09	ENEL OMT Legori	Cotilia Diga Turano		Italy	Gate wheel roller		FEROFORM T814
1999/04			Camu	Italy	Gate wheel roller	160 ID	FEROFORM T814
1999/06			Camu	Italy	Gate wheel roller	75 ID	FEROFORM T814
1999/08	Conminco Ltd			CAN	Gate wheel roller	40 ID	FEROFORM T814
1999/10			Camu	Italy	Gate wheel roller	5.3"x6.3"x6"	FEROFORM T814
2000/03			Camu	Italy	Gate wheel roller	75 ID	FEROFORM T814
2000/06			Camu	Italy	Gate wheel roller	35 ID	FEROFORM T814
2000/06			Camu	Italy	Gate wheel roller	35 ID	FEROFORM T814
2000/06			Cesari Giovanni	Italy	Gate wheel roller	110 ID	FEROFORM T814
2000/09	Alcan	Rousseau Gate Refurb	LAR Machinerie	CAN	Gate wheel roller		FEROFORM T814
2000/10	GE Hydro		Nugo Romano	Italy	Gate wear strips	200x780x35	FEROFORM T814
2000/12			Camu	Italy	Gate wheel roller	110 ID	FEROFORM T814

TENMAT Gate Applications

Date	Utility	Project	Manufacturer	Country	Application	Size	Material
2000/12			STF	Italy	Gate wheel roller	70 ID	FEROFORM T814
2001/01			Bianco	Italy	Gate wheel roller	115 ID	FEROFORM T814
2001/02			CEP Service	Italy	Gate wheel roller	140 ID	FEROFORM T814
2001/02	US DOT			USA	Gate pivot bush	6.5"x7.5"x6.9"	FEROGLIDE
2001/04	Alcan	Shipsaw Intake Gates	LAR Machinerie	CAN	Gate wheel roller		FEROFORM T814
2001/05			Baruzzi	Italy	Gate wheel roller	80 ID	FEROFORM T814
2001/06	Eurobarra de Caldereria			Spain	Radial gate trunion	95 ID	FEROFORM T814
2001/06			Camu	Italy	Gate wheel roller	110 ID	FEROFORM T814
2001/06	Ann Arbor Water Utility	Ann Arbor Water Treatment		USA	Gate Hinge	85x95x70	FEROGLIDE
2001/10		Costa Rica	Cesari Giovanni	Italy	Radial gate trunion	380 ID	FEROFORM T814
2001/11			Camu	Italy	Gate wheel roller	35 ID	FEROFORM T814
2001/11			Baruzzi	Italy	Gate wheel roller	25 ID	FEROFORM T814
2001/11			STF	Italy	Gate wheel roller	70 ID	FEROFORM T814
2001/11	USACE Galveston	Neches River Saltwater Barrier		USA	Gate pintle	18"x24"x12"	FEROGLIDE
2001/11	USACE Portland	Ice Harbor Dam	Metal Benders	USA	Gate wheel roller		FEROFORM T814
2001/11			Cesari Giovanni	Italy	Gate wheel roller	55 ID	FEROFORM T814
2002/02	California Dept of Water	Olivenheim Dam	Steel Fab	USA	Gate wheel roller	6.5"x7"x3.75"	FEROFORM T814
2002/03	Genesis Power	Tokaanu PS, Lake Taupo	Sinclair Knight Merz	New Zealand	Radial gate trunion	142 ID	FEROGLIDE spherical
2002/04	USACE Florida	Flood Control Project	Apex Inc	USA	Gate wheel roller	4.3"x5"x4"	FEROFORM T814
2002/05			Motion Industries	USA	Gate wheel roller	4"x5"x42	FEROFORM T814
2002/07	Bonneville Headgate		Fabrication Products	USA	Gate wheel thrust washer	2.065"x4.5"x0.25"	FEROFORM T814
2002/07	Grant County PUD 2	Wawampum Development		USA	Gate thrust washer	6"x11"x3/16"	FEROFORM T814
2002/07	Bonneville Headgate		Fabrication Products	USA	Gate wheel roller	2"x2.75"x5"	FEROGLIDE
2002/07	Grant County PUD 2	Wawampum Development		USA	Gate Hinge	7"x6"x2.69"	FEROFORM T814
2002/10	USACE Huntington WV	Marmet Lock and Dam	G&G Steel	USA	Gate wheel roller	2.5"x3.13"x3.5"	FEROFORM T814
2002/10	USACE Huntington WV	Marmet Lock and Dam	G&G Steel	USA	Gate wheel roller	2"x2.625"x1.75"	FEROFORM T814
2003/04	New Brunswick Power	Mactaquac		CAN	Gate wheel roller	6.375"x7"x7"	FEROFORM T814
2003/07	Steward Machine	Old River New Orleans		USA	Gate	11" cylinder, 16" pintle	FEROFORM T814
2003/07	HMI W&B			USA	Gate wheel roller		FEROFORM T814
2010/12	USACE New Orleans		Colonna Shipyard	USA	Gate pintle lower	30" dia	FEROGLIDE T814
2010/12	USACE New Orleans		Colonna Shipyard	USA	Gate hinge upper	24" dia	FEROGLIDE T814

FEROFORM™ T814

Application - Information

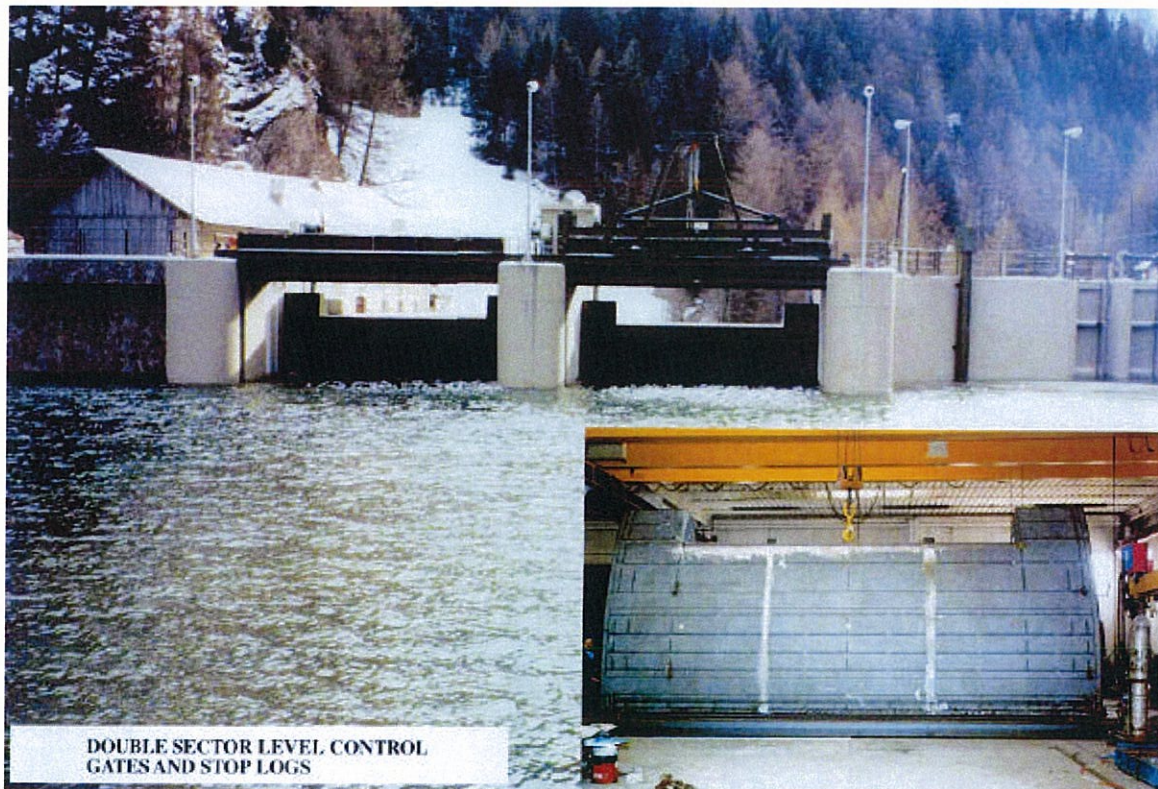


TP 0300-003P

Radial or Tainter Gates Trunnion Bearings

Installation: Bolzano Region, Italy.
Date of fitting: 1998
Contractor: Cesari Giovanni Srl
Scope: Refurbishment of 2 Radial or Sector Gates..
Bearing Size: 140 mm OD x 120 mm ID x 210 mm L
Load: 45,000 kg
Speed: 5 rpm
Benefits: Water lubricated.
Low friction and superb abrasion resistance.
Long life and maintenance free usage.

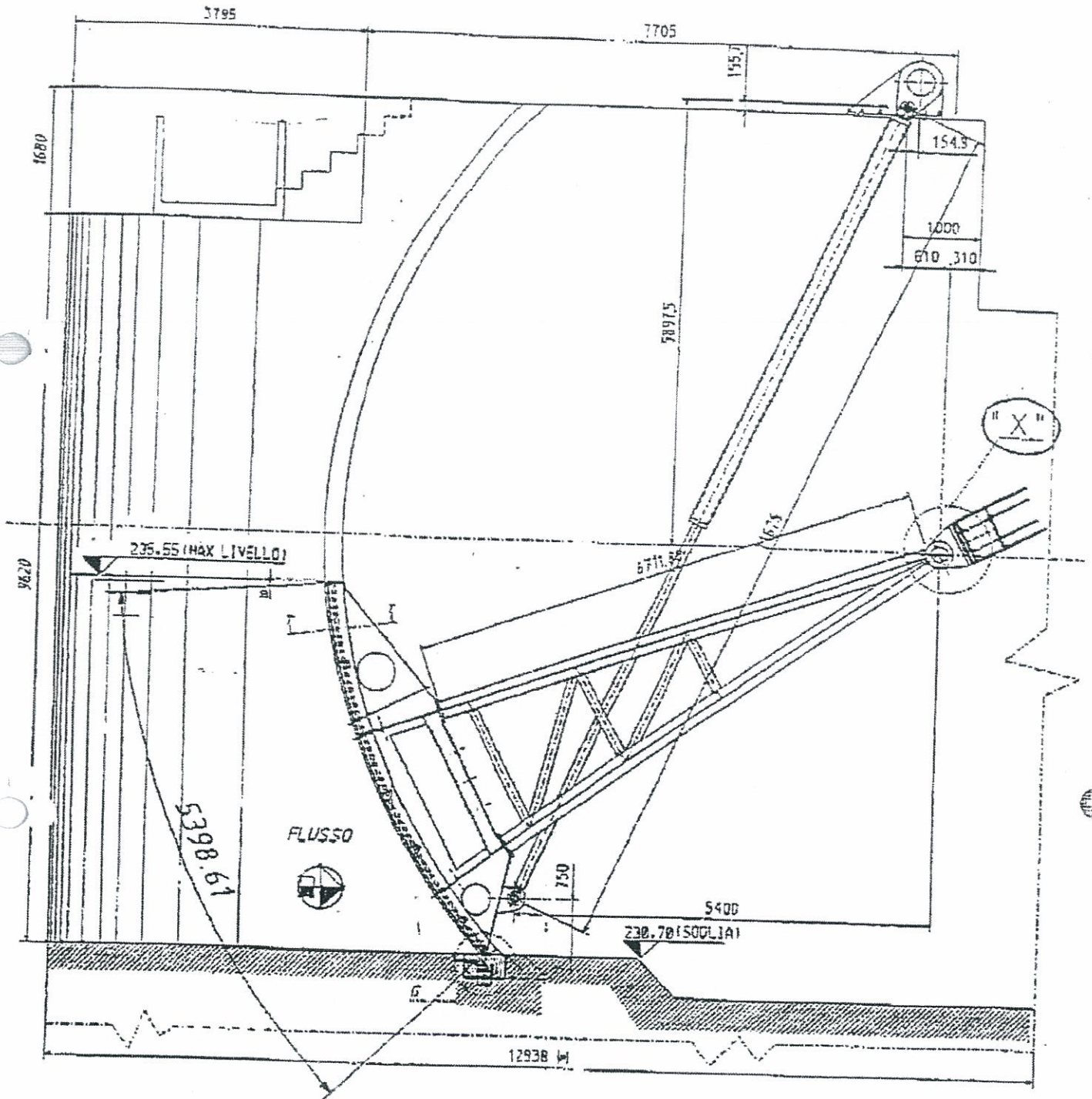
Bolzano Region Double Sector Level Control



For official use
November 2001

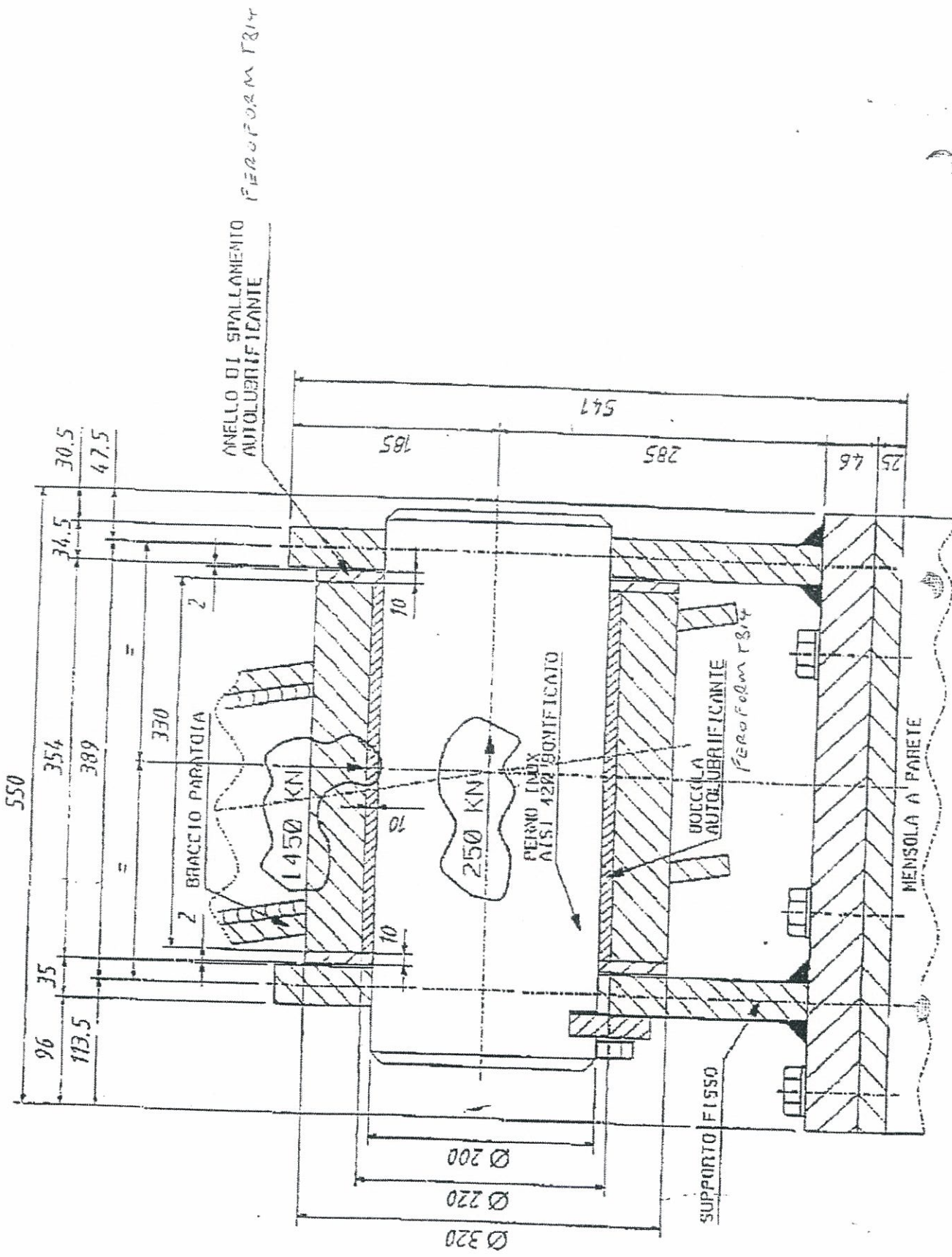
TENMAT Ltd, Bowdon House, Ashburton Road West, Trafford Park, Manchester, M17 1RU.
Tel: +44 (0) 161 872 2181 Fax: +44 (0) 161 872 7596
E-mail: info@tenmat.com Web site: www.tenmat.com

DETAIL OF BOLZANO GATE



DETTAGLIO "X"

DETAIL OF
RADIAL GATE APPLICATION



FEROFORM™ T814

Application - Information

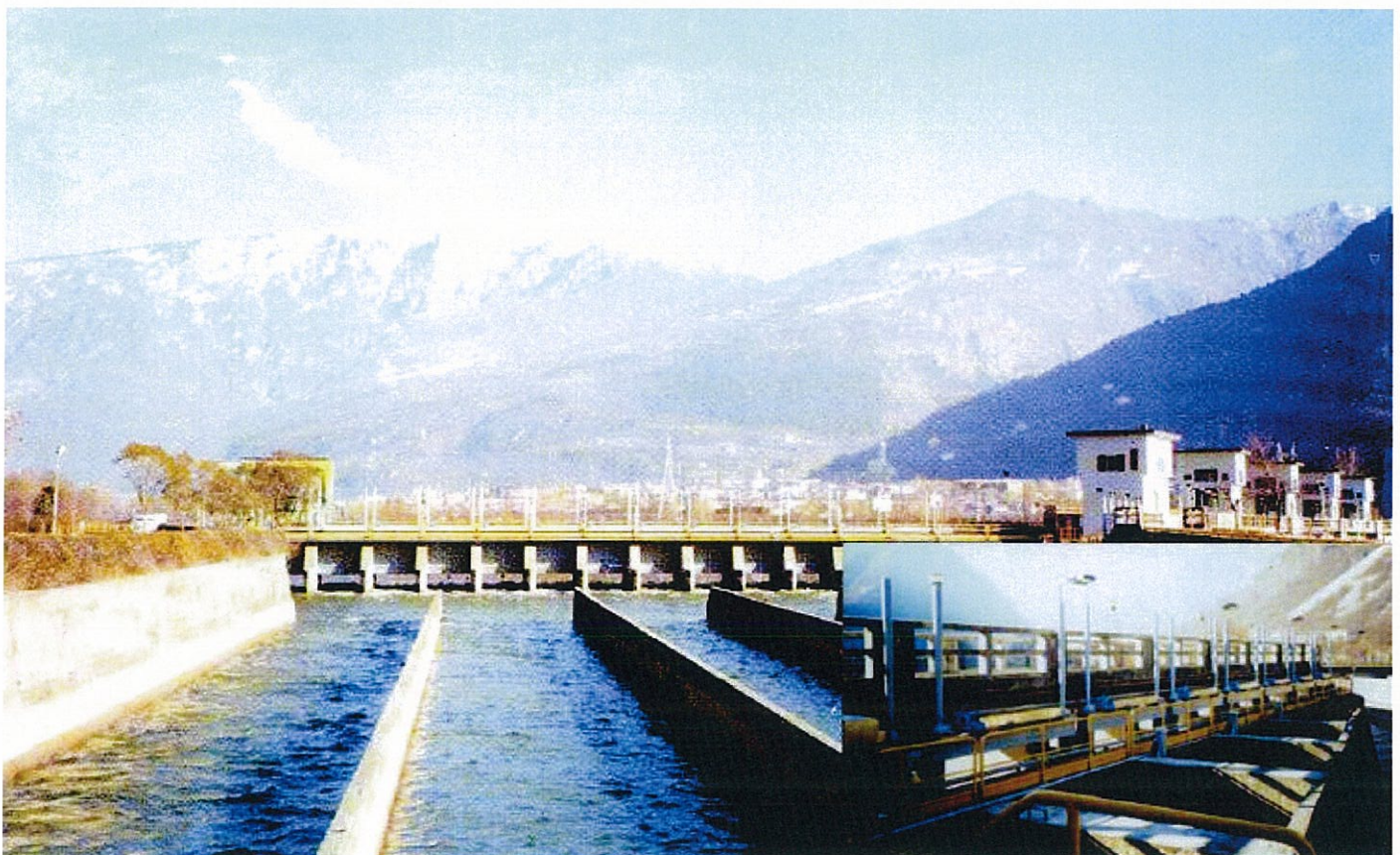


TP 0300-002P

Fixed Wheel Roller Gates Wheel Bushings

Installation: Ala Dam, Adige River, Italy.
Date of fitting: 1996
Contractor: Cesari Giovanni Srl
Scope: Revision of 16 sluice gates, 6 rollers per gate.
Bearing Size: 75 mm OD x 60 mm ID x 85 mm L
Load: 6,000 kg
Speed: 1 rpm
Benefits: Water lubricated.
Low friction and superb abrasion resistance.
Long life and maintenance free usage.

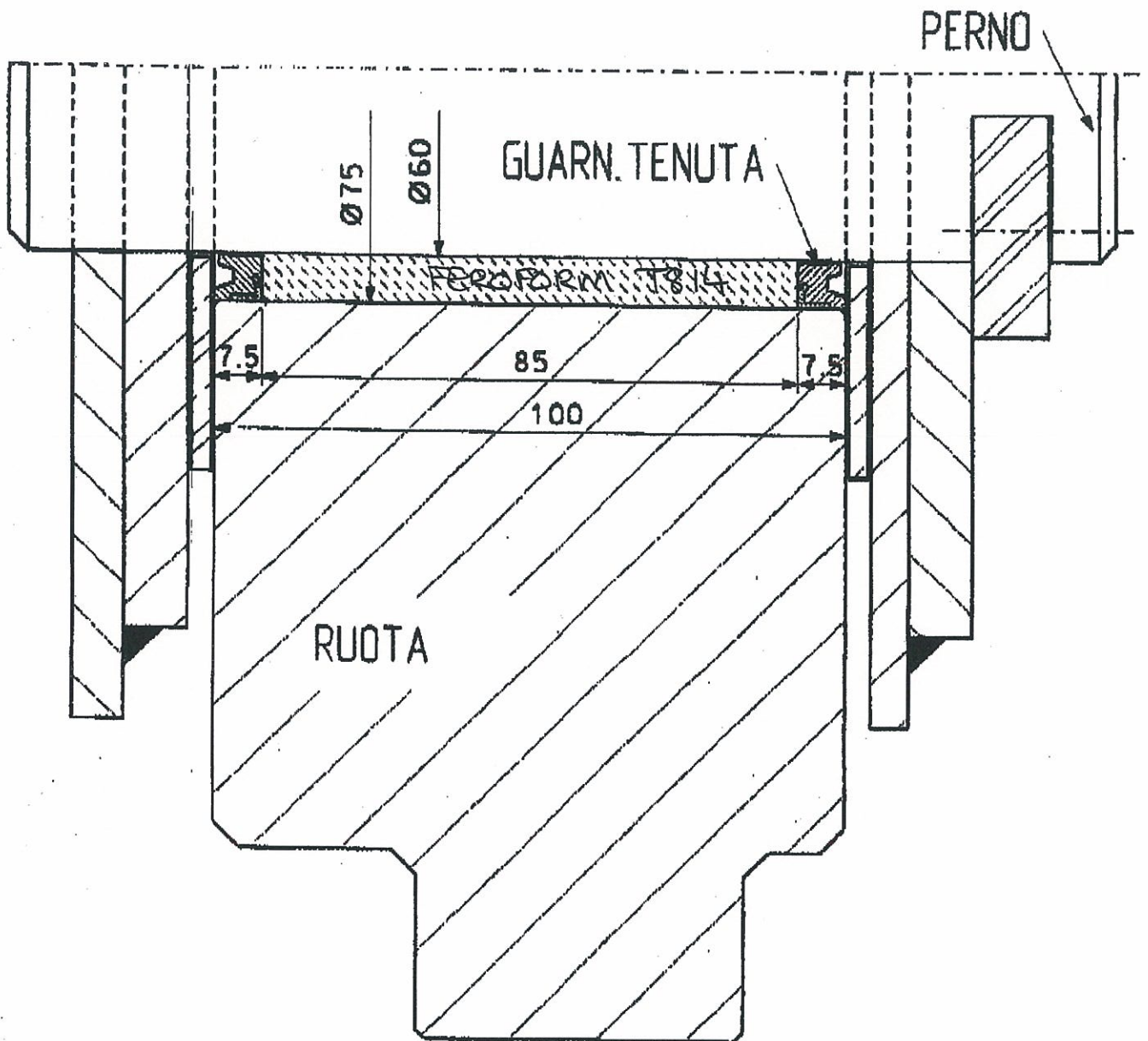
Intake on Adige River - Ala Dam



For official use
November 2001

TENMAT Ltd, Bowdon House, Ashburton Road West, Trafford Park, Manchester, M17 1RU.
Tel: +44 (0) 161 8722181 Fax: +44 (0) 161 872 7596
E-mail: info@tenmat.com Web site: www.tenmat.com

De=75 COME GUARNIZIONI DI TENUTA



ALA DAM, INTAKE ON ADIGE RIVER
FIXED WHEEL ROLLER GATE, 16 GATES.

FITTED: 1996

BEARINGS: 96 off (75 x 60 x 85 Lth)

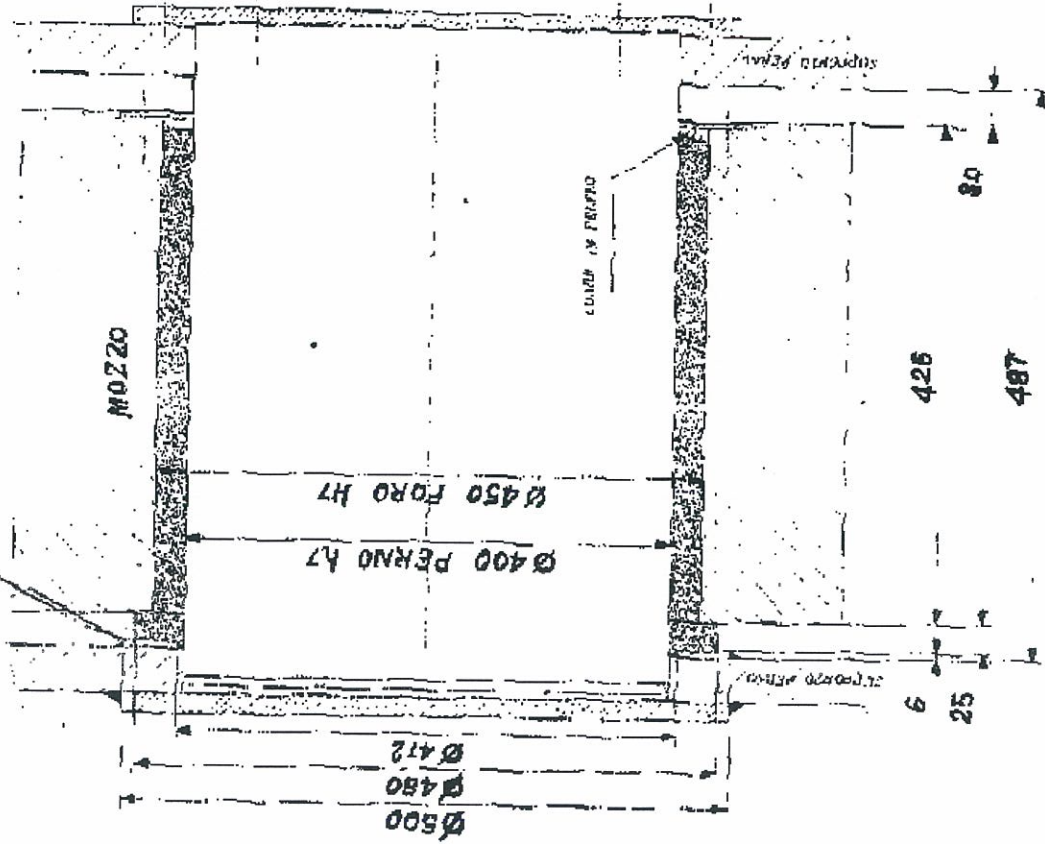
LOAD: 6000 kg

SPEED: 1 rpm



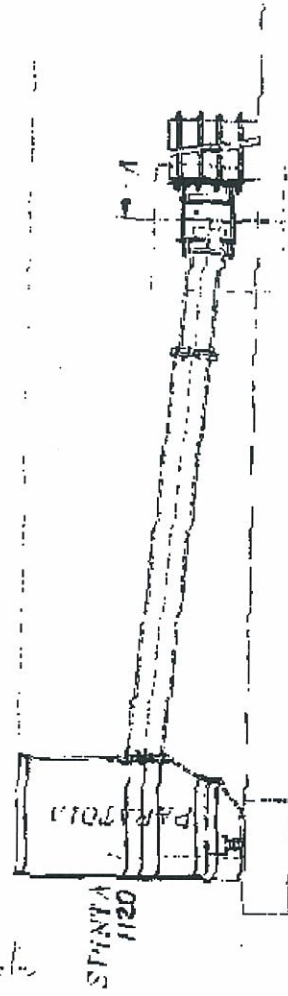
PIÙ SPAZIO SPINTA

SIZE A A



SCHEMA DI APPLICAZIONE

VISTA IN PIANTA



PROJECT IN COSTA RICA
CESARI GIOVANNI Srl

LOAD: 500,000 kg

SIZE: 450 mm OD x 400 mm ID x 426 mm L

SEPARATE FLANGE WASHER

SIZE: 580 mm OD x 400 mm ID x 20 mm Thk



TENMAT

FEROFORM T814 in Ducth Gates

FEROFORM T814 has been used in many Dutch gate projects since 1996.

The FEROFORM T814 has been chosen due to:

- Long life
- Low coefficient of friction
- Can work in wet and dry conditions
- No stick slip

The photographs below show one of the applications.



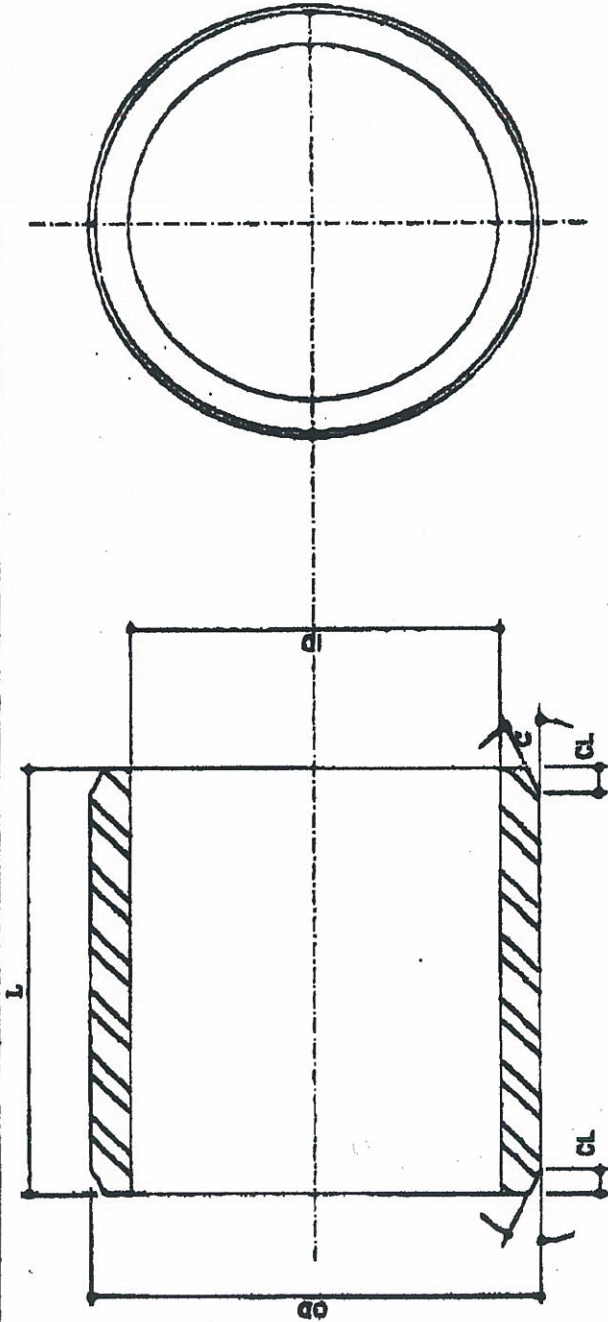
FEROFORM T814 upper hinge bearing.



Gate showing upper hinge on left hand side.



TENMAT



Store of 10
11/10/01

Part #	OD	ID	L	CL	C'	Shaft	Housing	Note
1	3.250	2.250	3.25	0	0	2.500	3.001	ROUGH SIZES. Finished on site
	3.150	2.350	3.20			2.498	3.000	
2	2.750	1.625	2.750	0	0	1.748	2.251	ROUGH SIZES. Finished on site
	2.650	1.525	2.650			1.750	2.250	

Notes

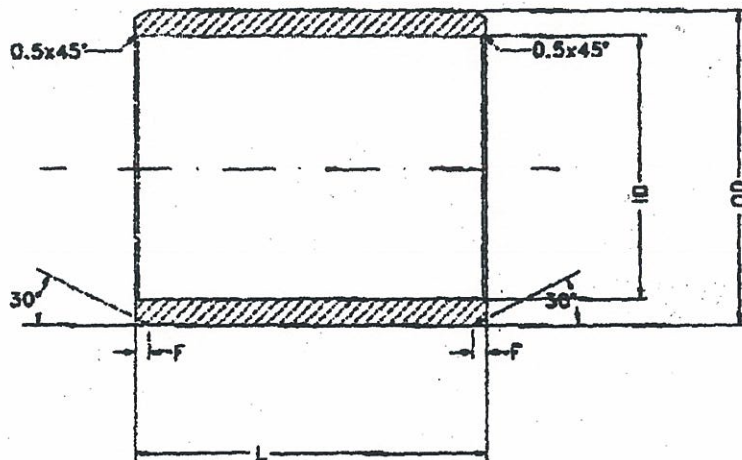
1. Materials: Ferroform TB14
2. Break all corners and deburr sharp edges
3. Press fit or freeze with liquid nitrogen or dry ice

511641 12/10/01

METAL BENDERS
01/11/2001

Part No.	10/08/01	Issued for construction	Drawing No.	WP 7224 INC
Date	10/08/01		Scale	None
Material			Material	Ferroform
Project: Walla Walla Fish Gates				
Division: Water parts system		Customer: Metal Benders		
Part No.: BUSHING				
TENMAT - Portland, OR (503) 638-8889				


Unless otherwise specified all dimensions are in inches	
TOLERANCES UNLESS OTHERWISE SPECIFIED	FINISH
.X	+/-0.050
.XI	+/-0.005
.XII	+/-0.002
ANGLE SURF	+/-1/32
SURFACE FINISH	✓
Deburr and break all corners	



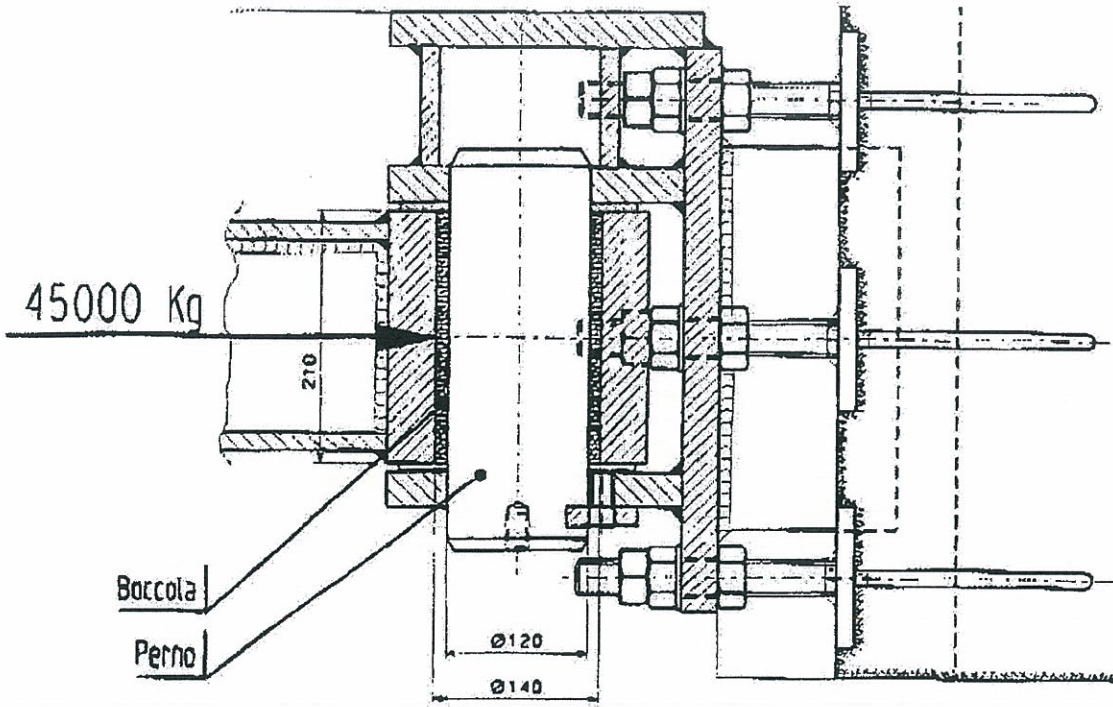
	Housing	Shaft	OD	ID	L	F	QA
I	da definire	50 ₀ -0.016	64 ^{+0.1} -0.1	50.37 50.45	86 ^{+0.1} -0.1	1.5	45
II	da definire	50 ₀ -0.016	64 ^{+0.1} -0.1	50.37 50.45	98 ^{+0.1} -0.1	1.5	48
III	da definire	40 ₀ -0.016	54 ^{+0.1} -0.1	40.34 40.42	80 ^{+0.1} -0.1	1.5	42
IV	da definire	160 ₀ -0.025	189 ^{+0.1} -0.1	160.72 160.82	245 ^{+0.1} -0.1	2.5	204

Materiale : FEROFORM T814

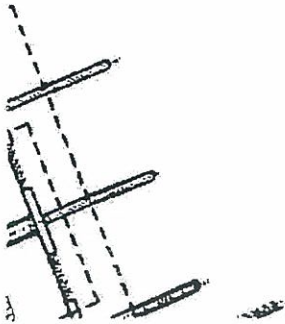
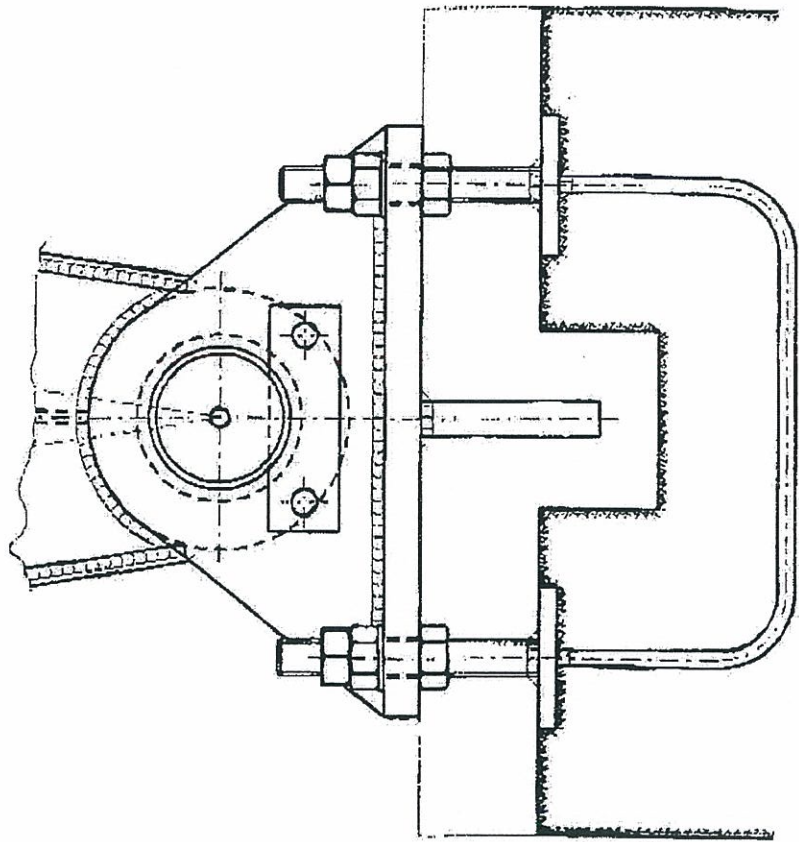
ENEL - Sluice Gates
Installed 09/98.

Rev.	Data			TSP-L1855	
0		Emissione			
				Data: 15/9/98	
Committente: Legari/ENEL OMT			Scala	Nessuna	
Cotilla - Diga Turano					
BOCCOLE paratoia a ruote					
			Tol. Gen.	+/- 0.1	
			 TENMAT Genova Tel. 010-5451343		





SNODO BRACCIO



Tenmat
 Ferroform 8/14

FEROFORM T814 in Vertical Gates

FEROFORM T814 is used in Vertical Gates for the wheel roller bearings and for the sliding pads.

The FEROFORM T814 has been chosen due to:

- Long life
- Low coefficient of friction
- Can work in wet and dry conditions
- No stick slip

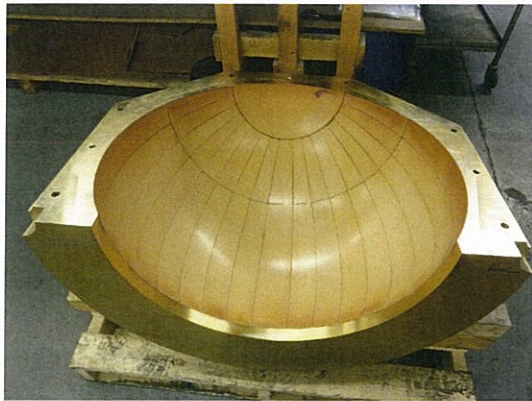


Bonneville Vertical Gate showing sliding pad and roller wheel bearing.

FEROGLIDE T814 in Gates

FEROGLIDE T814 is used in gates for the lower pintle bearings and upper hinge bearings on large gates due to its long wear life, low coefficient of friction, and freedom from stick slip.

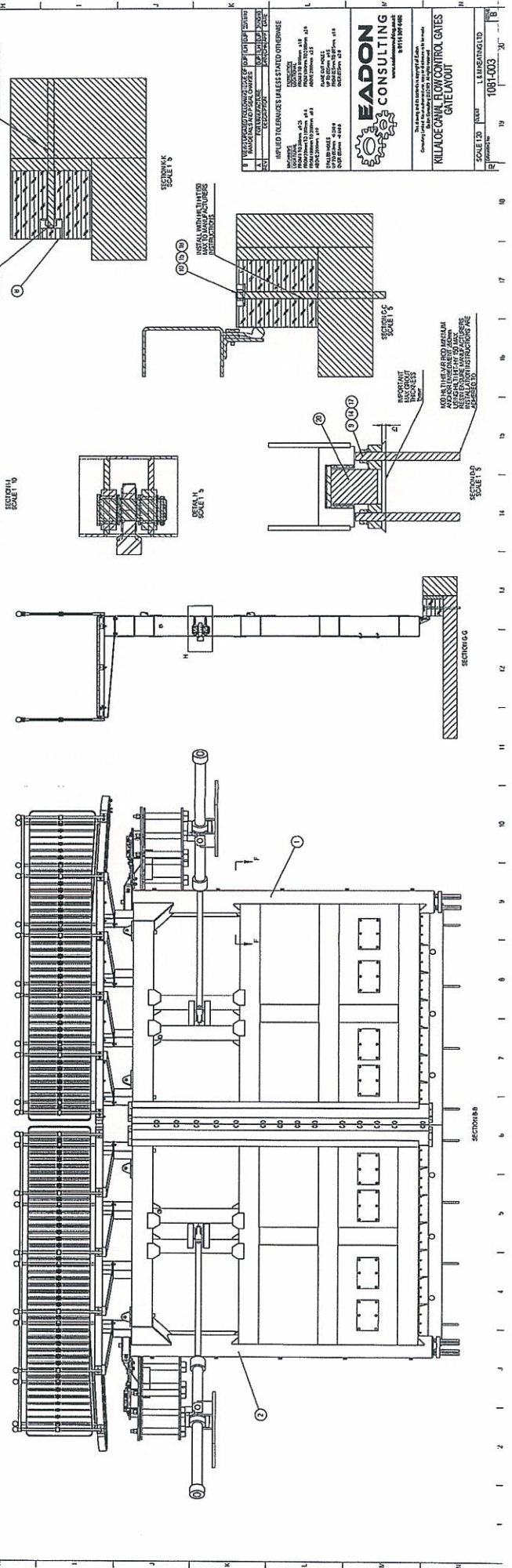
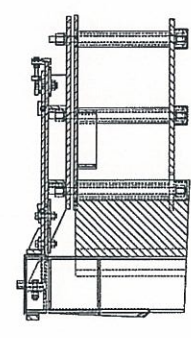
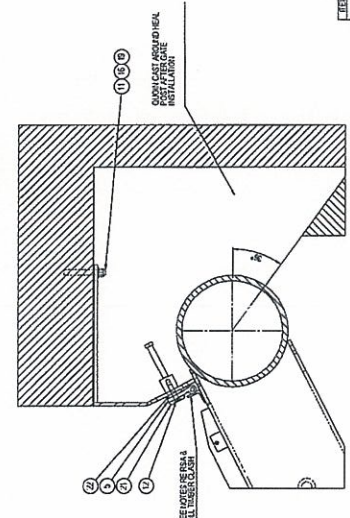
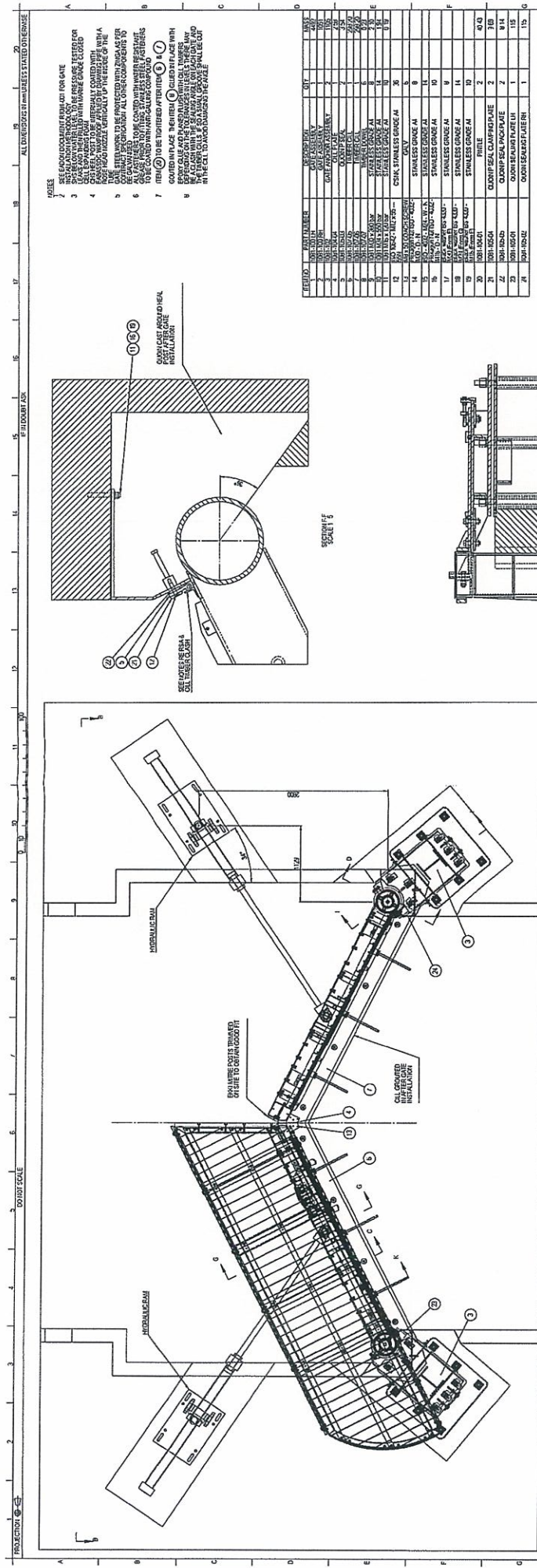
FEROGLIDE T814 has been approved by the US Army Corps of Engineers.



FEROGLIDE T814 lower pintle bearing.



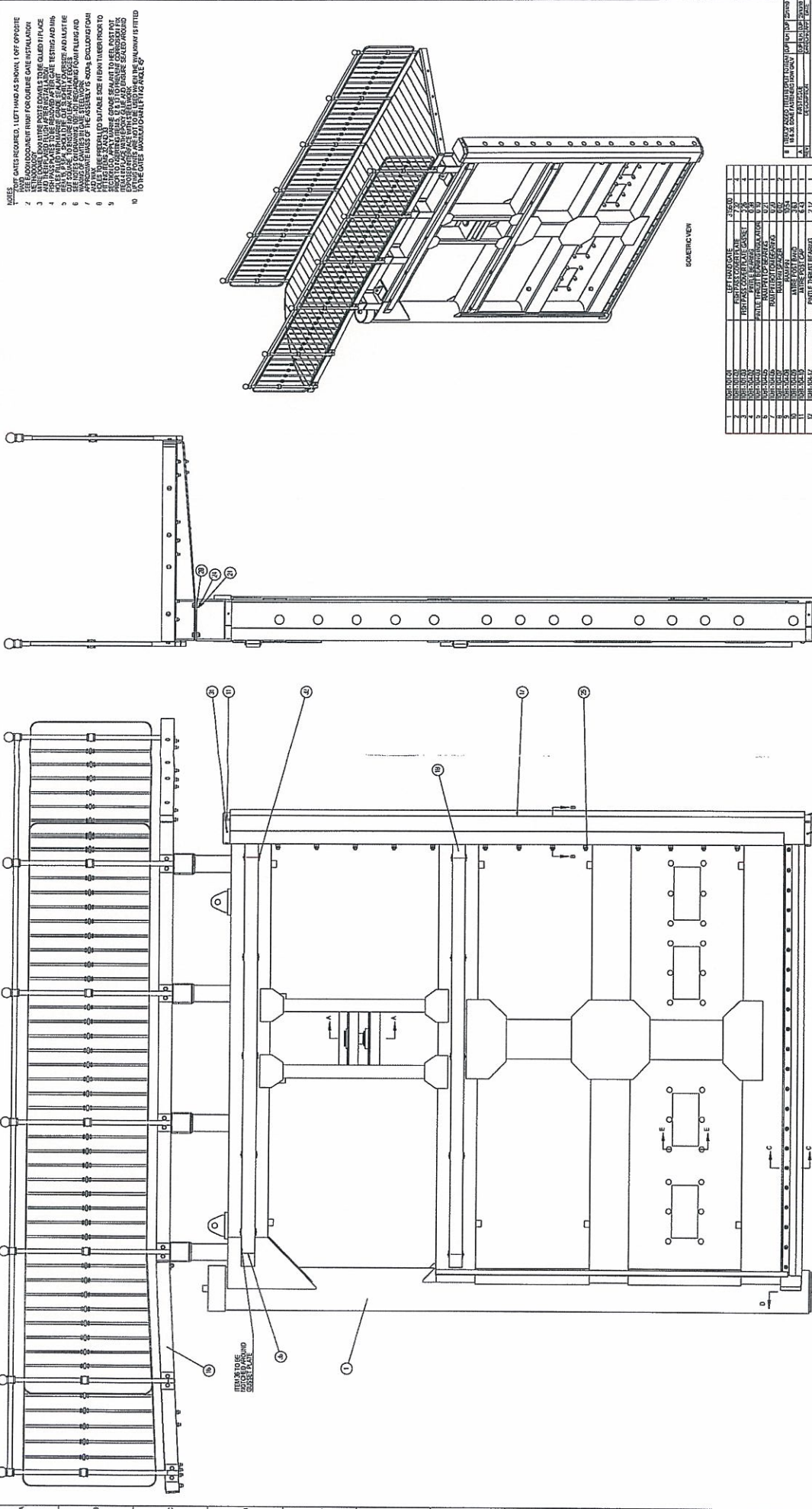
The finished gate with the upper hinge bearing and lower pintle bearing.



ITEM NO.	QUANTITY	DESCRIPTION	UNIT
1	1	HYDRAULIC CYLINDER	EA
2	1	HYDRAULIC CYLINDER HEAD	EA
3	1	HYDRAULIC CYLINDER ROD END	EA
4	1	HYDRAULIC CYLINDER PISTON	EA
5	1	HYDRAULIC CYLINDER PISTON ROD	EA
6	1	HYDRAULIC CYLINDER PISTON ROD NUT	EA
7	1	HYDRAULIC CYLINDER PISTON ROD WASHER	EA
8	1	HYDRAULIC CYLINDER PISTON ROD SEAL	EA
9	1	HYDRAULIC CYLINDER PISTON ROD O-RING	EA
10	1	HYDRAULIC CYLINDER PISTON ROD END BUSH	EA
11	1	HYDRAULIC CYLINDER BARREL	EA
12	1	HYDRAULIC CYLINDER BARREL O-RING	EA
13	1	HYDRAULIC CYLINDER BARREL SEAL	EA
14	1	HYDRAULIC CYLINDER BARREL NUT	EA
15	1	HYDRAULIC CYLINDER BARREL WASHER	EA
16	1	HYDRAULIC CYLINDER HEAD NUT	EA
17	1	HYDRAULIC CYLINDER HEAD WASHER	EA
18	1	HYDRAULIC CYLINDER HEAD SEAL	EA
19	1	HYDRAULIC CYLINDER HEAD O-RING	EA
20	1	HYDRAULIC CYLINDER HEAD GASKET	EA
21	1	HYDRAULIC CYLINDER HEAD COVER	EA
22	1	HYDRAULIC CYLINDER HEAD COVER NUT	EA
23	1	HYDRAULIC CYLINDER HEAD COVER WASHER	EA
24	1	HYDRAULIC CYLINDER HEAD COVER SEAL	EA
25	1	HYDRAULIC CYLINDER HEAD COVER O-RING	EA
26	1	HYDRAULIC CYLINDER HEAD COVER GASKET	EA
27	1	HYDRAULIC CYLINDER HEAD COVER BRACKET	EA
28	1	HYDRAULIC CYLINDER HEAD COVER BRACKET NUT	EA
29	1	HYDRAULIC CYLINDER HEAD COVER BRACKET WASHER	EA
30	1	HYDRAULIC CYLINDER HEAD COVER BRACKET SEAL	EA
31	1	HYDRAULIC CYLINDER HEAD COVER BRACKET O-RING	EA

- 1. SEE EADON DOCUMENT REFERENCE FOR DATE
- 2. MATERIALS SHALL BE AS SPECIFIED IN THE DRAWING
- 3. ALL DIMENSIONS ARE UNLESS OTHERWISE SPECIFIED
- 4. DIMENSIONS TO SURFACE UNLESS OTHERWISE SPECIFIED
- 5. DIMENSIONS TO CENTERLINE UNLESS OTHERWISE SPECIFIED
- 6. DIMENSIONS TO INSIDE UNLESS OTHERWISE SPECIFIED
- 7. DIMENSIONS TO OUTSIDE UNLESS OTHERWISE SPECIFIED
- 8. DIMENSIONS TO CENTERLINE UNLESS OTHERWISE SPECIFIED
- 9. DIMENSIONS TO SURFACE UNLESS OTHERWISE SPECIFIED
- 10. DIMENSIONS TO CENTERLINE UNLESS OTHERWISE SPECIFIED
- 11. DIMENSIONS TO INSIDE UNLESS OTHERWISE SPECIFIED
- 12. DIMENSIONS TO OUTSIDE UNLESS OTHERWISE SPECIFIED
- 13. DIMENSIONS TO CENTERLINE UNLESS OTHERWISE SPECIFIED
- 14. DIMENSIONS TO SURFACE UNLESS OTHERWISE SPECIFIED
- 15. DIMENSIONS TO CENTERLINE UNLESS OTHERWISE SPECIFIED
- 16. DIMENSIONS TO INSIDE UNLESS OTHERWISE SPECIFIED
- 17. DIMENSIONS TO OUTSIDE UNLESS OTHERWISE SPECIFIED
- 18. DIMENSIONS TO CENTERLINE UNLESS OTHERWISE SPECIFIED
- 19. DIMENSIONS TO SURFACE UNLESS OTHERWISE SPECIFIED
- 20. DIMENSIONS TO CENTERLINE UNLESS OTHERWISE SPECIFIED
- 21. DIMENSIONS TO INSIDE UNLESS OTHERWISE SPECIFIED
- 22. DIMENSIONS TO OUTSIDE UNLESS OTHERWISE SPECIFIED
- 23. DIMENSIONS TO CENTERLINE UNLESS OTHERWISE SPECIFIED
- 24. DIMENSIONS TO SURFACE UNLESS OTHERWISE SPECIFIED
- 25. DIMENSIONS TO CENTERLINE UNLESS OTHERWISE SPECIFIED
- 26. DIMENSIONS TO INSIDE UNLESS OTHERWISE SPECIFIED
- 27. DIMENSIONS TO OUTSIDE UNLESS OTHERWISE SPECIFIED
- 28. DIMENSIONS TO CENTERLINE UNLESS OTHERWISE SPECIFIED
- 29. DIMENSIONS TO SURFACE UNLESS OTHERWISE SPECIFIED
- 30. DIMENSIONS TO CENTERLINE UNLESS OTHERWISE SPECIFIED
- 31. DIMENSIONS TO INSIDE UNLESS OTHERWISE SPECIFIED

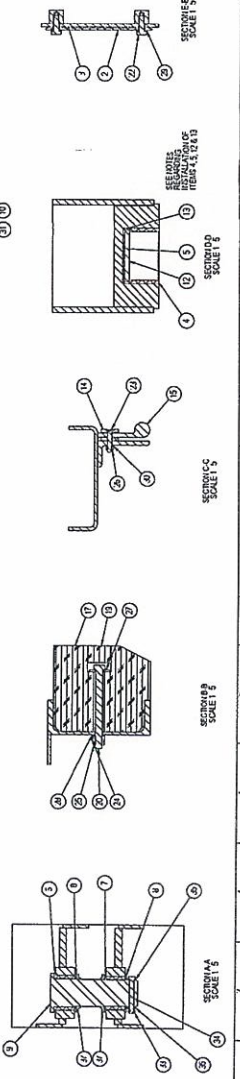
PROJECTION @ 1:50 DONUT SCALE ALL DIMENSIONS IN mm UNLESS STATED OTHERWISE



- NOTES**
1. GATE SHALL BE INSTALLED AS SHOWN, 1.00 METRE OFF OPPOSITE SIDE TO THE OTHER GATE.
 2. ALL DIMENSIONS SHALL BE AS SHOWN UNLESS STATED OTHERWISE.
 3. ALL DIMENSIONS SHALL BE IN MILLIMETERS UNLESS STATED OTHERWISE.
 4. ALL DIMENSIONS SHALL BE IN MILLIMETERS UNLESS STATED OTHERWISE.
 5. ALL DIMENSIONS SHALL BE IN MILLIMETERS UNLESS STATED OTHERWISE.
 6. ALL DIMENSIONS SHALL BE IN MILLIMETERS UNLESS STATED OTHERWISE.
 7. ALL DIMENSIONS SHALL BE IN MILLIMETERS UNLESS STATED OTHERWISE.
 8. ALL DIMENSIONS SHALL BE IN MILLIMETERS UNLESS STATED OTHERWISE.
 9. ALL DIMENSIONS SHALL BE IN MILLIMETERS UNLESS STATED OTHERWISE.
 10. ALL DIMENSIONS SHALL BE IN MILLIMETERS UNLESS STATED OTHERWISE.

ISOMETRIC VIEW

NO.	DESCRIPTION	QTY	UNIT
1	STEEL PLATE	25.00	M ²
2	STEEL PLATE	25.00	M ²
3	STEEL PLATE	25.00	M ²
4	STEEL PLATE	25.00	M ²
5	STEEL PLATE	25.00	M ²
6	STEEL PLATE	25.00	M ²
7	STEEL PLATE	25.00	M ²
8	STEEL PLATE	25.00	M ²
9	STEEL PLATE	25.00	M ²
10	STEEL PLATE	25.00	M ²
11	STEEL PLATE	25.00	M ²
12	STEEL PLATE	25.00	M ²
13	STEEL PLATE	25.00	M ²
14	STEEL PLATE	25.00	M ²
15	STEEL PLATE	25.00	M ²
16	STEEL PLATE	25.00	M ²
17	STEEL PLATE	25.00	M ²
18	STEEL PLATE	25.00	M ²
19	STEEL PLATE	25.00	M ²
20	STEEL PLATE	25.00	M ²
21	STEEL PLATE	25.00	M ²
22	STEEL PLATE	25.00	M ²
23	STEEL PLATE	25.00	M ²
24	STEEL PLATE	25.00	M ²
25	STEEL PLATE	25.00	M ²
26	STEEL PLATE	25.00	M ²
27	STEEL PLATE	25.00	M ²
28	STEEL PLATE	25.00	M ²
29	STEEL PLATE	25.00	M ²
30	STEEL PLATE	25.00	M ²
31	STEEL PLATE	25.00	M ²
32	STEEL PLATE	25.00	M ²
33	STEEL PLATE	25.00	M ²
34	STEEL PLATE	25.00	M ²
35	STEEL PLATE	25.00	M ²
36	STEEL PLATE	25.00	M ²
37	STEEL PLATE	25.00	M ²
38	STEEL PLATE	25.00	M ²
39	STEEL PLATE	25.00	M ²
40	STEEL PLATE	25.00	M ²
41	STEEL PLATE	25.00	M ²
42	STEEL PLATE	25.00	M ²
43	STEEL PLATE	25.00	M ²
44	STEEL PLATE	25.00	M ²
45	STEEL PLATE	25.00	M ²
46	STEEL PLATE	25.00	M ²
47	STEEL PLATE	25.00	M ²
48	STEEL PLATE	25.00	M ²
49	STEEL PLATE	25.00	M ²
50	STEEL PLATE	25.00	M ²
51	STEEL PLATE	25.00	M ²
52	STEEL PLATE	25.00	M ²
53	STEEL PLATE	25.00	M ²
54	STEEL PLATE	25.00	M ²
55	STEEL PLATE	25.00	M ²
56	STEEL PLATE	25.00	M ²
57	STEEL PLATE	25.00	M ²
58	STEEL PLATE	25.00	M ²
59	STEEL PLATE	25.00	M ²
60	STEEL PLATE	25.00	M ²
61	STEEL PLATE	25.00	M ²
62	STEEL PLATE	25.00	M ²
63	STEEL PLATE	25.00	M ²
64	STEEL PLATE	25.00	M ²
65	STEEL PLATE	25.00	M ²
66	STEEL PLATE	25.00	M ²
67	STEEL PLATE	25.00	M ²
68	STEEL PLATE	25.00	M ²
69	STEEL PLATE	25.00	M ²
70	STEEL PLATE	25.00	M ²
71	STEEL PLATE	25.00	M ²
72	STEEL PLATE	25.00	M ²
73	STEEL PLATE	25.00	M ²
74	STEEL PLATE	25.00	M ²
75	STEEL PLATE	25.00	M ²
76	STEEL PLATE	25.00	M ²
77	STEEL PLATE	25.00	M ²
78	STEEL PLATE	25.00	M ²
79	STEEL PLATE	25.00	M ²
80	STEEL PLATE	25.00	M ²
81	STEEL PLATE	25.00	M ²
82	STEEL PLATE	25.00	M ²
83	STEEL PLATE	25.00	M ²
84	STEEL PLATE	25.00	M ²
85	STEEL PLATE	25.00	M ²
86	STEEL PLATE	25.00	M ²
87	STEEL PLATE	25.00	M ²
88	STEEL PLATE	25.00	M ²
89	STEEL PLATE	25.00	M ²
90	STEEL PLATE	25.00	M ²
91	STEEL PLATE	25.00	M ²
92	STEEL PLATE	25.00	M ²
93	STEEL PLATE	25.00	M ²
94	STEEL PLATE	25.00	M ²
95	STEEL PLATE	25.00	M ²
96	STEEL PLATE	25.00	M ²
97	STEEL PLATE	25.00	M ²
98	STEEL PLATE	25.00	M ²
99	STEEL PLATE	25.00	M ²
100	STEEL PLATE	25.00	M ²



EADON CONSULTING
 CONSULTING ENGINEERS
 10/11, 10/12, 10/13, 10/14, 10/15, 10/16, 10/17, 10/18, 10/19, 10/20, 10/21, 10/22, 10/23, 10/24, 10/25, 10/26, 10/27, 10/28, 10/29, 10/30, 10/31, 10/32, 10/33, 10/34, 10/35, 10/36, 10/37, 10/38, 10/39, 10/40, 10/41, 10/42, 10/43, 10/44, 10/45, 10/46, 10/47, 10/48, 10/49, 10/50, 10/51, 10/52, 10/53, 10/54, 10/55, 10/56, 10/57, 10/58, 10/59, 10/60, 10/61, 10/62, 10/63, 10/64, 10/65, 10/66, 10/67, 10/68, 10/69, 10/70, 10/71, 10/72, 10/73, 10/74, 10/75, 10/76, 10/77, 10/78, 10/79, 10/80, 10/81, 10/82, 10/83, 10/84, 10/85, 10/86, 10/87, 10/88, 10/89, 10/90, 10/91, 10/92, 10/93, 10/94, 10/95, 10/96, 10/97, 10/98, 10/99, 10/100

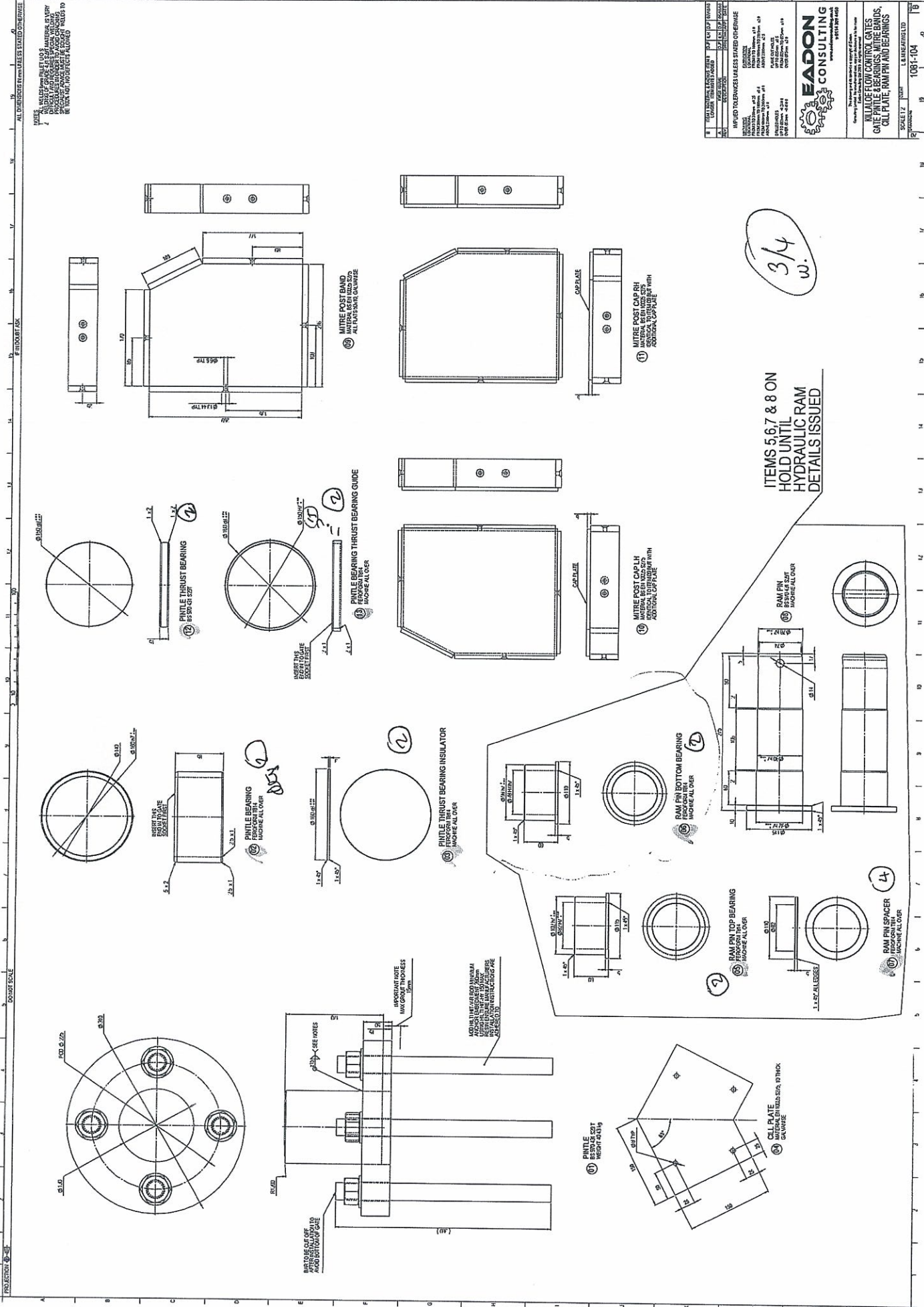
APPLIED TOLERANCES UNLESS STATED OTHERWISE

±0.5mm for all dimensions unless otherwise stated.

SCALE 1:100

LAHORE/PAKISTAN

PROJECT NO. 10/11-100



1	ITEM NO.	DESCRIPTION	QUANTITY	UNIT
1	1	MITRE POST CAP (RH)	1	EA
2	2	MITRE POST CAP (LH)	1	EA
3	3	MITRE POST CAP (RH)	1	EA
4	4	MITRE POST CAP (LH)	1	EA
5	5	MITRE POST CAP (RH)	1	EA
6	6	MITRE POST CAP (LH)	1	EA
7	7	MITRE POST CAP (RH)	1	EA
8	8	MITRE POST CAP (LH)	1	EA
9	9	MITRE POST CAP (RH)	1	EA
10	10	MITRE POST CAP (LH)	1	EA
11	11	MITRE POST CAP (RH)	1	EA
12	12	MITRE POST CAP (LH)	1	EA
13	13	MITRE POST CAP (RH)	1	EA
14	14	MITRE POST CAP (LH)	1	EA
15	15	MITRE POST CAP (RH)	1	EA
16	16	MITRE POST CAP (LH)	1	EA
17	17	MITRE POST CAP (RH)	1	EA
18	18	MITRE POST CAP (LH)	1	EA
19	19	MITRE POST CAP (RH)	1	EA
20	20	MITRE POST CAP (LH)	1	EA
21	21	MITRE POST CAP (RH)	1	EA
22	22	MITRE POST CAP (LH)	1	EA
23	23	MITRE POST CAP (RH)	1	EA
24	24	MITRE POST CAP (LH)	1	EA
25	25	MITRE POST CAP (RH)	1	EA
26	26	MITRE POST CAP (LH)	1	EA
27	27	MITRE POST CAP (RH)	1	EA
28	28	MITRE POST CAP (LH)	1	EA
29	29	MITRE POST CAP (RH)	1	EA
30	30	MITRE POST CAP (LH)	1	EA
31	31	MITRE POST CAP (RH)	1	EA
32	32	MITRE POST CAP (LH)	1	EA
33	33	MITRE POST CAP (RH)	1	EA
34	34	MITRE POST CAP (LH)	1	EA
35	35	MITRE POST CAP (RH)	1	EA
36	36	MITRE POST CAP (LH)	1	EA
37	37	MITRE POST CAP (RH)	1	EA
38	38	MITRE POST CAP (LH)	1	EA
39	39	MITRE POST CAP (RH)	1	EA
40	40	MITRE POST CAP (LH)	1	EA
41	41	MITRE POST CAP (RH)	1	EA
42	42	MITRE POST CAP (LH)	1	EA
43	43	MITRE POST CAP (RH)	1	EA
44	44	MITRE POST CAP (LH)	1	EA
45	45	MITRE POST CAP (RH)	1	EA
46	46	MITRE POST CAP (LH)	1	EA
47	47	MITRE POST CAP (RH)	1	EA
48	48	MITRE POST CAP (LH)	1	EA
49	49	MITRE POST CAP (RH)	1	EA
50	50	MITRE POST CAP (LH)	1	EA
51	51	MITRE POST CAP (RH)	1	EA
52	52	MITRE POST CAP (LH)	1	EA
53	53	MITRE POST CAP (RH)	1	EA
54	54	MITRE POST CAP (LH)	1	EA
55	55	MITRE POST CAP (RH)	1	EA
56	56	MITRE POST CAP (LH)	1	EA
57	57	MITRE POST CAP (RH)	1	EA
58	58	MITRE POST CAP (LH)	1	EA
59	59	MITRE POST CAP (RH)	1	EA
60	60	MITRE POST CAP (LH)	1	EA
61	61	MITRE POST CAP (RH)	1	EA
62	62	MITRE POST CAP (LH)	1	EA
63	63	MITRE POST CAP (RH)	1	EA
64	64	MITRE POST CAP (LH)	1	EA
65	65	MITRE POST CAP (RH)	1	EA
66	66	MITRE POST CAP (LH)	1	EA
67	67	MITRE POST CAP (RH)	1	EA
68	68	MITRE POST CAP (LH)	1	EA
69	69	MITRE POST CAP (RH)	1	EA
70	70	MITRE POST CAP (LH)	1	EA
71	71	MITRE POST CAP (RH)	1	EA
72	72	MITRE POST CAP (LH)	1	EA
73	73	MITRE POST CAP (RH)	1	EA
74	74	MITRE POST CAP (LH)	1	EA
75	75	MITRE POST CAP (RH)	1	EA
76	76	MITRE POST CAP (LH)	1	EA
77	77	MITRE POST CAP (RH)	1	EA
78	78	MITRE POST CAP (LH)	1	EA
79	79	MITRE POST CAP (RH)	1	EA
80	80	MITRE POST CAP (LH)	1	EA
81	81	MITRE POST CAP (RH)	1	EA
82	82	MITRE POST CAP (LH)	1	EA
83	83	MITRE POST CAP (RH)	1	EA
84	84	MITRE POST CAP (LH)	1	EA
85	85	MITRE POST CAP (RH)	1	EA
86	86	MITRE POST CAP (LH)	1	EA
87	87	MITRE POST CAP (RH)	1	EA
88	88	MITRE POST CAP (LH)	1	EA
89	89	MITRE POST CAP (RH)	1	EA
90	90	MITRE POST CAP (LH)	1	EA
91	91	MITRE POST CAP (RH)	1	EA
92	92	MITRE POST CAP (LH)	1	EA
93	93	MITRE POST CAP (RH)	1	EA
94	94	MITRE POST CAP (LH)	1	EA
95	95	MITRE POST CAP (RH)	1	EA
96	96	MITRE POST CAP (LH)	1	EA
97	97	MITRE POST CAP (RH)	1	EA
98	98	MITRE POST CAP (LH)	1	EA
99	99	MITRE POST CAP (RH)	1	EA
100	100	MITRE POST CAP (LH)	1	EA

3/4
w.

ITEMS 5,6,7 & 8 ON
HOLD UNTIL
HYDRAULIC RAM
DETAILS ISSUED

RAM PIN
SPACER
MACHINE ALLOW

RAM PIN
TOP BEARING
MACHINE ALLOW

RAM PIN
BOTTOM BEARING
MACHINE ALLOW

MITRE POST CAP (RH)
MATERIAL SHALL BE AS SPECIFIED IN THE BIDDING DOCUMENTS

MITRE POST CAP (LH)
MATERIAL SHALL BE AS SPECIFIED IN THE BIDDING DOCUMENTS